
ATI-TV™ Wonder User's Guide



The PCI-based
TV Tuner and
Video Capture Card

Disclaimer

The manufacturer (MFR) reserves the right to make changes to this document and the products which it describes without notice. The MFR shall not be liable for technical or editorial errors or omissions made herein; nor for incidental or consequential damages resulting from the furnishing, performance, or use of this material.

The MFR makes no representation that the interconnection of products in the manner described herein will not infringe on existing or future patent rights, nor do the descriptions contained herein imply the granting of license to make, use or sell equipment constructed in accordance with this description.

The PCI accelerators have been designed to support the PCI local bus standards. Some computers use proprietary local bus circuitry and therefore may not be fully compatible with the MFR's local bus cards. Although tested successfully in a wide variety of computer systems, the MFR cannot be held responsible for any incompatibilities which may occur between this card and the system configuration you plan to use. We recommend that you check with the dealer or distributor for your computer system before installing your card.

Version 1.0 P/N 137-70089-10

© Copyright 1999, by ATI Technologies Inc.

All rights reserved, including those to reproduce this guide or parts thereof, in any form without the express written permission of ATI Technologies Inc.

Features and specifications are subject to change without notice. Trademarks and/or registered trademarks are the properties of their respective owners:

ATI, RAGE, and ATI-TV are either registered trademarks or trademarks of ATI Technologies Inc. in the United States, Canada, and/or other countries.

Pentium and **Celeron** are either registered trademarks or trademarks of Intel Corporation in the United States and/or other countries.

Windows and **WebTV** are either registered trademarks or trademarks of Microsoft Corporation in the United States and/or other countries.

Voodoo Banshee is either a registered trademark or a trademark of 3Dfx in the United States and/or other countries.

Riva 128 and **Riva TNT** are either registered trademarks or trademarks of NVIDIA in the United States and/or other countries.

Virge and **Savage3D** are either registered trademarks or trademarks of S3 in the United States and/or other countries.

Contents

Getting Started	5
What You'll Need	5
Features	6
Installing the ATI-TV Wonder Tuner Card	7
Connecting the Audio	9
ATI-TV Wonder Connectors	12
Installing the Software	12
Starting the ATI VIDEO PLAYER	13
Using the Online Manual	14
Troubleshooting	15
 ATI VIDEO PLAYER Basics	 17
Online Help	17
The Control Panels	17
The Task control panel	18
The Display Panel	20
 Using the TV Tuner	 22
Setting up the TV tuner	23
Validating TV channels	23
Zooming and unzooming	24
Hot Words	24
Channel Lockout	26
Program Lockout	27
Video Desktop	27
Closed-Captioned Text	28
Visual Channel Selection	29
Scheduled Viewing	30
Digital VCR	31
TV Magazine	32
Secondary Audio Program (SAP)	34

Capturing Video and Audio	35
Capturing Still Frames	36
Capturing Video	36
Capturing from your VCR or Camcorder	38
Playing Captured Video and Audio	40
Editing Captured Video and Audio	40
Playing Audio CDs	41
Advanced Setup	43

CHAPTER 1

Getting Started



Get real-time information when you want it. Move the TV window, zoom it to full-screen, and capture video. images.

Now you can watch TV, videos, or games on your computer!

ATI-TV Wonder lets you watch up to 125 cable television channels and 70 antenna channels in smooth, full-motion video on the whole screen or in a window.

You can capture still frames and movie clips, channel surf, create your own TV transcripts, and turn your PC into a digital VCR.

Note: Not all channel options are available in all countries. The actual number of stations received will vary depending on the services provided in your area.

What You'll Need

- **Computer System** — Pentium[®], Pentium[®] II, or Celeron[™] processor-based or compatible system, with at least 8MB of system memory.
- **Monitor** — VGA, minimum 640x480 resolution.
- **Operating System** — Windows[®] 95, or Windows[®] 98.
- **Sound card and speakers** certified for Windows[®] 95 and Windows[®] 98 use.
- **Expansion Slot** — PCI.
- **Graphics Accelerator** with overlay support. The following graphic accelerators work with the *ATI-TV Wonder* tuner card (Please check our web site, www.atitech.com, for an updated list of supported graphic accelerators):

- **ATI products:**
- RAGE, RAGE II, RAGE II+, RAGE IIC, RAGE PRO, RAGE PRO Turbo, RAGE LT, RAGE LT Pro, RAGE 128
- **Other products:**
- NVIDIA RIVA™ 128, NVIDIA RIVA™ TNT, 3Dfx Voodoo™ Banshee, S3 Virge™ DX/VX, S3 Savage3D™

Features

NOTE
ATI VIDEO
PLAYER
TV audio is
monaural-
only in
Europe.

- Television-quality video in a window and full screen with dbx® stereo TV audio.
- **Composite Video and S-Video inputs** for VCR, video camera, laser-disc player, video game consoles, etc.
- **Capture Video and Audio** with a simple mouse click.
- **Live Motion Video Desktop**, using your favorite TV show as wallpaper.
- **Channel Scan** through all available stations in seconds.
- **Zoom-In** to any part of the screen.
- **Closed Captioning** support (NTSC only), including **Transcript Creation** and **Hot Words** that alert you when the ATI VIDEO PLAYER software receives information you want to see.
- **Visual Channel Selection** — select channels by clicking on their “thumbnail” images.
- **Scheduled Viewing** — play particular files and/or watch selected TV channels at times you specify.
- **TV Magazine** — transcribe closed-captioned broadcasting and remove advertisements, including pictures and text.
- **Channel Lockout** and **Program Lockout** for parental control.
- **Secondary Audio Program.**
- **Digital VCR** — Schedule and record TV shows to your hard drive.

Installing the ATI-TV Wonder Tuner Card

Please read these important safety instructions before you proceed with the installation of your *ATI-TV Wonder* tuner card.

Static electricity can damage sensitive electronic components. Discharge your body's static electric charge by touching a grounded surface — for example, the metal area of the computer chassis — before performing any hardware procedure.

The manufacturer assumes no liability for any damage caused by improper installation of any components by unauthorized service personnel. If you do not feel comfortable performing the installation, consult a qualified computer technician.



Damage to system components, the accelerator card, and injury to yourself may result if power is applied during installation.



Important Safety Instructions

- **GROUNDING – CAUTION:** FOR CONTINUED PROTECTION AGAINST RISK OF ELECTRIC SHOCK AND FIRE, THE **ATI-TV Wonder** TUNER CARD SHOULD BE INSTALLED ONLY IN PERSONAL COMPUTERS EQUIPPED WITH A THREE-WIRE GROUNDING PLUG—A PLUG HAVING A THIRD (GROUNDING) PIN. If you are unable to insert the plug into the outlet, contact your electrician to replace your obsolete outlet.
- **OUTDOOR ANTENNA GROUNDING** – Since an outdoor antenna or cable system is connected to the product, be sure that the antenna or cable system is grounded so as to provide some protection against voltage surges and built-up static charges. Article 810 of the National Electrical Code, ANSI/NFPA 70, provides information with regard to proper grounding of the mast and supporting structure, grounding of the lead-in wire to the antenna discharge unit, size of grounding conductors, location of antenna-discharge unit, connection of grounding electrodes, and requirements for the grounding electrode.
- **POWER LINES** – An outside antenna system should not be located in the vicinity of overhead power lines or other light or power circuits, or where it can fall into such power lines or circuits. When installing an outside antenna system, extreme care should be taken to keep from touching such power lines or circuits as contact with them may be fatal.

Installing the *ATI-TV Wonder* tuner card

- 1 Power-off the computer, then disconnect the power cable.
- 2 Remove the computer cover. If necessary, consult your computer system manual for removal instructions.
Remember to discharge your body's static electricity by touching the metal area of the computer chassis.
- 3 Select an empty PCI expansion slot for the **ATI-TV Wonder** tuner card.
- 4 With the slot cover removed, grasp the card by the top edge and carefully seat it firmly into the slot.
- 5 Fasten the retaining bracket with a screw.

*If you wish to connect the audio for your **ATI-TV Wonder** tuner card internally, please see **Internal Audio Connection** on page 10 before reassembling your system. **Note that ATI recommends the external audio connection method.***

- 6 Reinstall the computer cover.
- 7 Connect your TV cable or video input to the **ATI-TV Wonder** card. For more information about the connectors on the **ATI-TV Wonder** tuner card, please see *ATI-TV Wonder Connectors* on page 12.

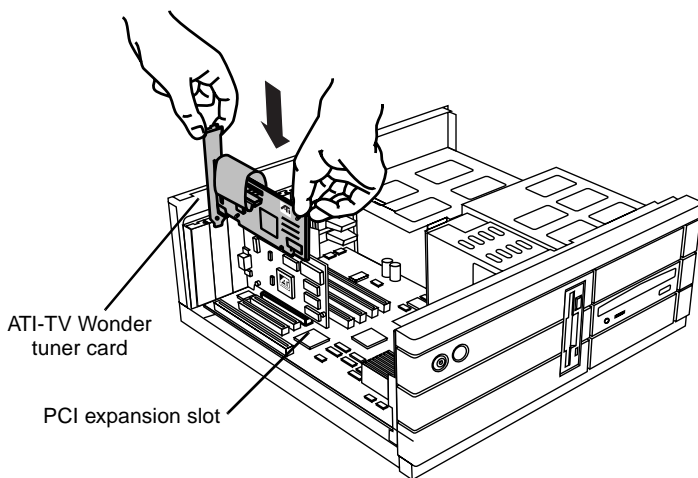


Figure 1. Installing the ATI-TV Wonder tuner card

Connecting the Audio

You may connect the audio portion either externally or internally. If you do not feel comfortable installing cabling inside your computer, follow the procedure below. If you wish to dispense with the external sound connections, please see the procedure [Internal Audio Connection](#) on page 10. Note that ATI recommends you use the **external** audio connection method.

External Audio Connection

- 1 Looking at the back of your computer, locate the audio out connector on the **ATI-TV Wonder** tuner card.
- 2 Locate the Line-In connector on your sound card. If necessary, refer to the documentation supplied with your sound card.
- 3 Attach one end of the sound cable to the Audio Out on the **ATI-TV Wonder** tuner card and the other end to the Line-In on your sound card.

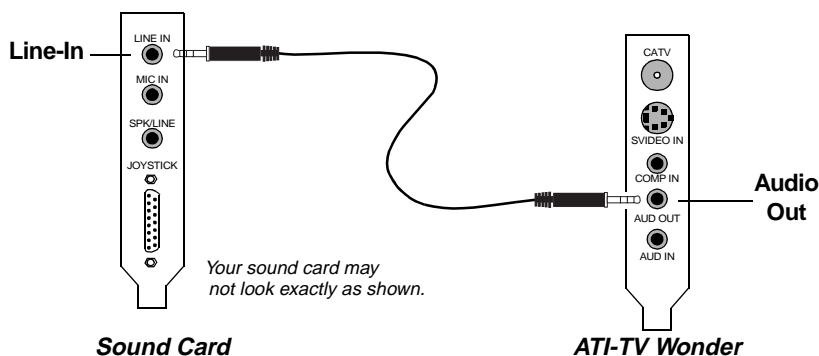


Figure 2. Connecting the audio externally

Internal Audio Connection

When connecting cables to the computer, look at the connector and the socket carefully. The audio cables included with your

ATI-TV Wonder tuner card are keyed to fit into the socket in only one way.

DO NOT FORCE THE CONNECTOR INTO THE SOCKET.

If you encounter difficulty, realign the connector with the socket. Then gently but firmly slide the connector fully into the socket.

Note that ATI recommends the *external* audio connection method.

Note: If you already have an external audio connection, internal audio connection is not necessary.

- 1 Power off the computer, then disconnect the power cable.
See Figure 2. Connecting the audio internally on page 11.
- 2 Remove the computer cover. If necessary, consult your computer system manual for removal instructions.
- 3 Remember to discharge your body's static electricity by touching the metal area of the computer chassis.
- 4 Locate your CD-ROM drive. On the rear of the drive are several connectors. Match the CD AUDIO OUT connector to either the black or the white connector on the special audio cables included with your **ATI-TV Wonder** tuner card. Carefully and firmly insert either the black or the white connector into the CD AUDIO OUT socket.
Remember to use the end of the audio cable with both a black and a white connector. Connect only ONE (1) of these plugs to the CD-ROM.
- 5 Connect the other end of the audio cable (with one white connector) to the CD IN socket of your new **ATI-TV Wonder** tuner card.
- 6 Use the second audio cable to connect your **ATI-TV Wonder** tuner card to your sound card. Gently but firmly push the single white connector on the cable to the CD OUT socket on your **ATI-TV Wonder** tuner card.
- 7 Locate your sound card. Locate the CD IN socket, typically located near the top of the board. Determine if the CD IN socket requires a black or a white connector.
Look carefully at your sound card. The socket should be labeled CD IN or AUX IN.
- 8 Gently but firmly insert the appropriate connector (white or black) into the CD IN socket on your sound card.
- 9 Replace the computer cover and reconnect the power cable.

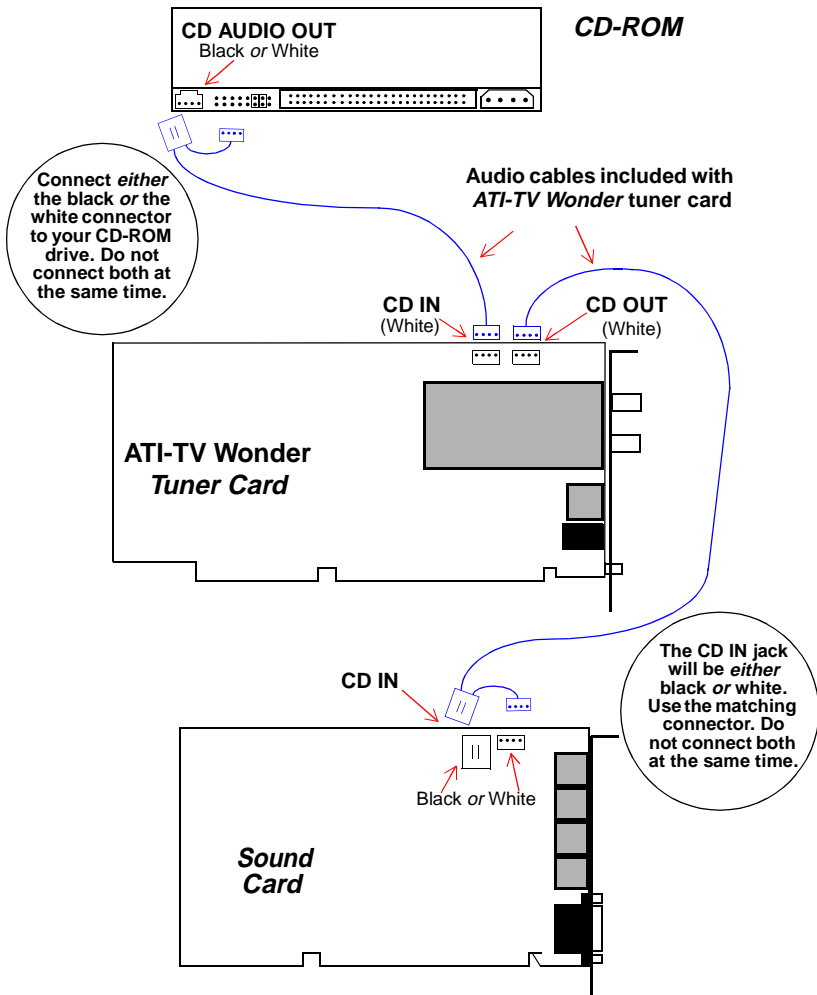


Figure 2. Connecting the audio internally

ATI-TV Wonder Connectors

The TV Tuner provides stereo audio input, audio output, and three video input connectors:

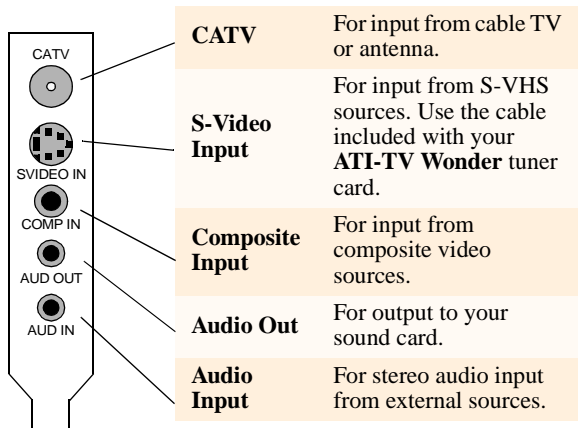


Figure 3. The **ATI-TV Wonder** connectors

If your video source provides both **Composite** and **S-Video**, **S-Video** will produce the best results.

Installing the Software

Your **ATI-TV Wonder** tuner card works with the **ATI Video Player** software included on the installation CD-ROM.

To install the enhanced ATI drivers and the ATI VIDEO PLAYER for Windows® 95 or Windows® 98

- 1** Insert the ATI INSTALLATION CD-ROM into your CD-ROM drive.

If Windows® runs the CD-ROM automatically, proceed to step 5.

- 2** Click **Start**.
- 3** Select **Run**.
- 4** Type the following:

D:\ATISSETUP


(If **D** is not your CD-ROM drive, substitute **D** with the correct drive letter.)

- 5** Click on **Easy Install** to begin the Installation Wizard.
- 6** Follow the on-screen instructions to complete the installation.

Starting the ATI VIDEO PLAYER

Windows® 95 or Windows® 98 initial set up

For correct audio performance, your sound card must be active. Follow these steps to display the Line-In Audio setting in the Windows® Volume Control Panel:

- 1** Right-click the speaker icon  in the Taskbar.
- 2** Click **Open Volume Controls**.
- 3** If the **Line-In** volume control slider is not visible, click **Options**, then click **Properties**. Select **Line-In** (or **CD Audio** for internal audio connections) and click **OK**.
- 4** Adjust the volume setting of the **Line-In** volume control slider. If you have connected the audio internally, then adjust the appropriate slider: “CD Audio” or “AUX IN.”
- 5** If the **Mute** checkbox is checked, click it to turn off muting.
- 6** Close the window to save your settings.

Windows® 95 or Windows® 98 everyday use

- 1** Start Windows®.
- 2** Click **Start** and select **Programs**.
- 3** Select **ATI Multimedia**, then select **ATI Video Player**.



Alternatively, you may start the ATI Video Player by doing the following:

- 1** Right-click the ATI icon on your taskbar.
- 2** Select **ATI Programs**, then select **ATI Video Player**.

The Online Manual has further information and instruction regarding the use of the **ATI Video Player**.

To select the sound card connector for TV audio input

The sound card connector determines which mixer slider is controlled by the **ATI Video Player**'s volume control slider.

- 1** Click the **TV** button  in the Task control panel.
- 2** Click the **Setup** button  in the TV Tuner control panel.
- 3** Click the **Video** tab.
- 4** Click the **Audio Input** list box.
- 5** Select **Line-In** from the drop-down list then click **OK**.

Line-In
MIDI
CD Audio
Line-In
Wave

If you have connected the audio internally, then choose “CD Audio” or “AUX IN”, as appropriate.

Using the Online Manual

The Online Manual provides instructions on using the **ATI Video Player** and its features: Control Panel, viewing media playback, setting the TV Tuner, and capturing video.

To open the Online Manual

- 1** Insert the ATI INSTALLATION CD-ROM into your CD-ROM drive.

If Windows[®] runs the CD-ROM automatically, proceed to step 5.
- 2** Click **Start**.
- 3** Select **Run**.
- 4** Type the following:

D:\ATISSETUP
(If **D** is not your CD-ROM drive, substitute **D** with the correct drive letter.)
- 5** Click the **Online Manual** button. The first time you use the Online Manual, the installer will install the necessary components. Click the **Online Manual** button after this installation to view the manual.

Troubleshooting

Because a typical computer system consists of many different parts, difficulties may arise from a combination of items. Check the following list and find a symptom that's similar, then try the suggested solution.

Video is unstable.

- Check that you're using the correct broadcast standard format (NTSC, PAL, or SECAM).
- Check the quality of your incoming TV signal on another receiver; bad reception may be the cause.

Video is in black and white only.

- Check the connectors setting to make sure you've selected the correct input (CATV, Composite, or S-Video) for your video source device.



No video or audio.

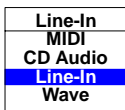
- Check that the audio and video connectors are securely plugged into the correct jacks.
- Check that the **ATI-TV Wonder** tuner card is securely seated in its PCI slot. If the problem still exists, try a different PCI expansion slot.
- Make sure that the monitor and computer are plugged in and receiving power.
- Check that the audio cables are connected properly. (See [Connecting the Audio](#) on page 9)

No audio.

- Ensure that another Windows[®] audio program is not muting the sound.
- Check the mixer line input setting in the audio software provided with your sound card.

No television audio.

- Select the sound card connector for TV audio input:
- 1** Click the **TV** button  in the Task control panel.
 - 2** Click the **Setup** button  in the TV Tuner control panel.
 - 3** Click the **Video** tab.
 - 4** Click the **Audio Input** list box.
 - 5** Select **Line-In** from the drop-down list then click **OK**.



If you have connected the audio internally, then choose “CD Audio” or “AUX IN”, as appropriate.

*Remember: to hear audio from the television, you must make a connection between your **ATI-TV Wonder** tuner card and your sound card. See [Connecting the Audio](#) on page 9.*

If you still cannot hear TV audio, check your mixer settings by following the steps under [Windows® 95 or Windows® 98 initial set up](#) on page 13.

Windows® 95 and Windows® 98 troubleshooting tips.

- Right-click the ATI icon in the taskbar and select **Troubleshooting**.
- If you have problems during start-up, start your computer in Safe Mode.

To load Windows® 95/Windows® 98 in Safe Mode

- 1** Turn on your computer.
- 2** In **Windows® 95**, press the **F8** key when “Starting Windows 95” appears on the screen.

In **Windows® 98**, press and hold the **Ctrl** key until the Windows® 98 Startup Menu appears, then **select the number for Safe Mode** and press **Enter**.
- 3** Select **Safe Mode**.
 - Disable any programs that launch automatically when you start Windows® 95/Windows® 98.

CHAPTER 2

ATI VIDEO PLAYER Basics

This chapter explains the basics of how to use the special features that the *ATI Video Player* software has to offer. Because North American and European television use different broadcast standards, closed-captioning and related features are available only in North America; Teletext is available only in Europe, and the *ATI Video Player* TV audio is monaural-only in Europe.

Online Help



ATI Player Help. Click the Help button at any time to open the online help.

F1

Context-Sensitive Help. Context-sensitive help is always available in each panel. Just press the F1 key.



Bubble Help. Simply move the mouse cursor over a control to see a description of its purpose. As you become familiar with the *ATI Video Player* software, you may want to turn off help — uncheck the **Show Bubble Help** checkbox in the **Display** tab in the *ATI Video Player* Setup window. (For more information, see *Display* in *Advanced Setup* on page 43).



ATI Desktop Help. For help on the *ATI Video Player* software's graphics features, double-click the ATI icon in the lower-right corner of your screen.

See *Starting the ATI VIDEO PLAYER* on page 13 for details on setting up and using the *ATI Video Player*.

The Control Panels

When you select a mode in the Task control panel or press a shortcut key, the Control panel changes to the appropriate control panel for that mode. All modes provide context-sensitive help; see *Online Help* on page 17.

The Task control panel

The Task control panel indicates what mode the player is in and what it's doing. (Your Task control panel may not look exactly like the illustration—only installed or available features have controls.)




Context-sensitive help is always available when you press the F1 key. All control panels provide bubble help; just point your mouse at a control to see a pop-up description of its function.

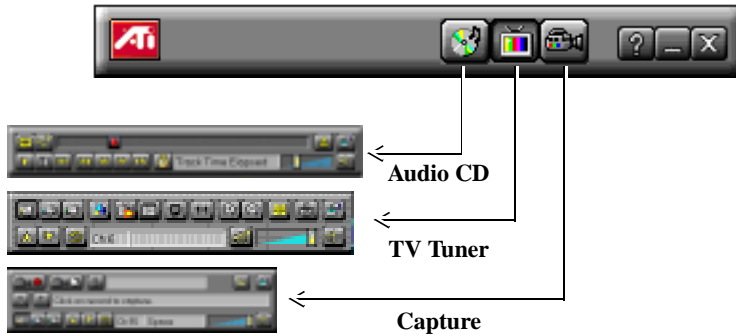


*Instantly select the function you want –
the Task control panel shows you what's happening.*




Switching modes

Use the Task control panel buttons to switch between Audio CD, TV Tuner, and Capture mode.

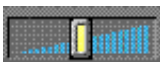
	Audio CD	Play standard audio CDs.	See Playing Audio CDs on page 41.
	TV	Display live video sources, such as television programs.	See Using the TV Tuner on page 22.
	Capture	Capture still images, video sequences, or audio-only.	See Capturing Video and Audio on page 35.




You can also use the following shortcut keys to start CD audio, TV tuner, or capture.

	CD Audio	Press F4
	TV Tuner	Press F6
	Capture	Press F8

Controlling the audio volume



The TV Tuner, Audio CD Player, and Media Playback panels have a volume control slider. Use the mouse to move the slider to increase and decrease audio volume. You can specify which audio mixer slider to control: click the setup button , then click the **Video** tab. Click the **Audio Input** list box, and select the input from the drop-down list.

Muting the audio volume

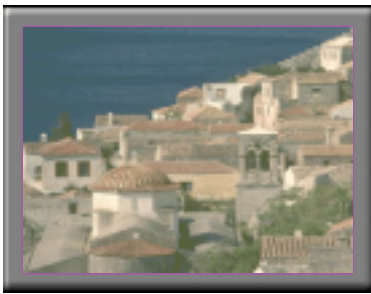


The TV Tuner, Audio CD Player, and Media Playback panels have a Mute button that you can click to temporarily turn off the audio. Click the button again or move the volume control slider to cancel muting.

The Display Panel

The Display panel is the “screen” where your media plays. It’s a familiar, TV-style display that you can resize, place on top of other windows, and position automatically in one of nine locations on the screen.




The F2 key hides/shows the control panel, to save desktop space.



Move the Display panel, zoom it to full-screen, and minimize it as an icon.

Sizing the Display panel

You can resize the Display panel using the mouse, the Control panel buttons, or CTRL key combination:

	Increase size of Display Panel	CTRL + Up Arrow
	Decrease size of Display Panel	CTRL + Down Arrow
	Play full-screen	CTRL + F

In **TV mode**, when you play full-screen video, the Playback panel becomes “thin”. To show/hide the thin Playback panel, press F2.

You can also use the CTRL key to display these preset sizes:

160x120 pixels.	CTRL+1
240x180 pixels.	CTRL+2
320x240 pixels.	CTRL+3
640x480 pixels.	CTRL+4
Toggle between full screen and current size.	CTRL+F ALT+F

Attaching and Detaching Panels

You can detach ATI VIDEO PLAYER control panels from the Display panel, move them to any location on your screen, and re-attach them. Panels attached to the Display panel share the Display panel's **snap window to:** and **always on top** settings (For more information, see *Display* in *Advanced Setup* on page 43).

To detach a panel

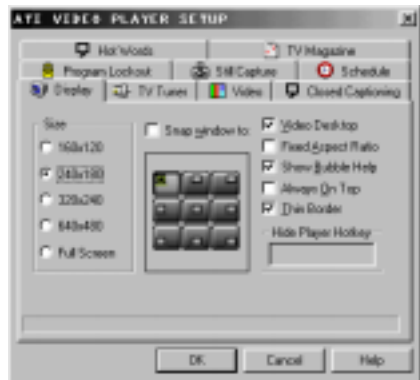
While holding down the Shift key, click the panel where the panel edges meet, then **drag** it away.

To attach a panel

Drag the unattached panel near the Display panel until its outline changes, then **release** the mouse button. The panels will snap back together.


The Setup Window

The Setup window provides for all the advanced functionality of the *ATI Video Player*. Use the Setup window to change the options for the TV tuner, the digital VCR, and the audio CD player. You may access the Setup window three ways:



Shown is the Display tab of the TV Tuner Setup window

Opening the Setup Window

- Click on the **Setup** button  in the active control panel.
- Right-click on the image in the Display panel and select **Properties**.
- When *ATI Video Player* is the active application, press **Ctrl-S**.

CHAPTER 3

Using the TV Tuner

The TV Tuner displays cable or broadcast television and smooth, full-motion video on the whole screen or in a window. You can use the TV Tuner to:

- Watch television on your computer as you work in another software application.
- Watch a videotape or laser disk movie on your computer.
- Capture, save, and print TV and video images.
- Display and record closed-captioned text.
- Replace your desktop with live TV display.

The **ATI-TV Wonder** tuner card with the **ATI Video Player** software accepts a wide range of video inputs: TV antenna or cable, VCR, Video camera, laser disk, and video games.



Click the TV Tuner button in the Task control panel.



The Control panel changes to the TV control panel (in this illustration, CATV is selected).

You can use the Setup window to adjust color, select the broadcast standard, add and delete channels, and set closed-caption options (see *Video*, *Tuner*, and *Closed Caption* in [Advanced Setup](#) on page 43.) Or press TAB and use the cursor keys to adjust the picture on-screen, just like a TV.


Context-sensitive help is always available when you press the F1 key. All controls provide bubble-help; move the mouse cursor over a control to see a pop-up description of its function.

Setting up the TV tuner

Perform these simple steps to set up the TV:

Choose antenna or cable

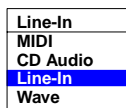
- 1 Open the **Setup** window in TV Tuner mode.

Open the Setup window by clicking on the Setup button  pressing Ctrl-S, or right-clicking on the Display.

- 2 Click the **TV Tuner** tab.
- 3 From the drop-down list, select the TV broadcast format (Antenna or Cable) appropriate to the country you are in.

Set up the audio

Select the sound card connector used for TV audio input:



- 1 Open the **Setup** window in TV Tuner mode.
- 2 Click the **Video** tab.
- 3 Click the **Audio Input** scroll box.
- 4 Select a sound card connector from the drop-down list.

Scan for available channels

- 1 Open the **Setup** window in TV Tuner mode.
- 2 Click the **TV Tuner** tab
- 3 Click the **Auto Scan** button in the TV Tuner setup dialog.

The TV Tuner scans for all available channels and stores them when you click the **Set** button. When scanning is complete, you can type in a name for each channel.

Validating TV channels

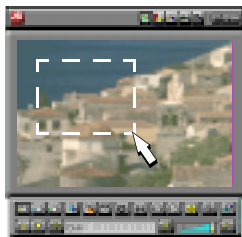
When you click the **Auto Scan** button in the Tuner setup dialog (see **Tuner** in *Advanced Setup* on page 43), the TV Tuner scans for all available channels and stores them. When scanning is complete, you can type in a name for each channel. Before scanning, use the drop-down list box to select the broadcast format and the cable standard.

If you want to change channel assignments, you can use the slider that appears at the top of the dialog box. For example, you could assign the actual channel 5 to the *ATI Video Player* software's channel 2. Select channel 2 from the list, then drag the slider left or right until channel 5 appears in the Display window. Click OK to save your settings.


- Double-clicking the slider returns the current channel's assignment to normal; for example, selecting channel 2 tunes in channel 2.
- Clicking the **Auto Scan** button resets the channel assignments to default and removes all channel naming.

Zooming and unzooming

Select and enlarge a portion of the display by dragging the mouse across the Display Panel



To select and enlarge a portion of the display

- 1 Click within the display panel.
- 2 Hold down the mouse button and draw a rectangle around the area you want to zoom.
- 3 To return your display to normal, click the **Unzoom** button  in the Control panel.

Hot Words

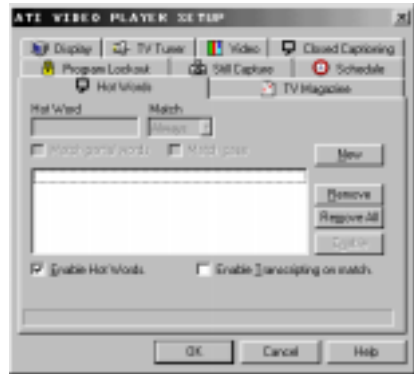
North
American
feature

Have your computer watch TV for you! When you turn on Closed Captioning, you can specify words and phrases that the *ATI Video Player* software will detect in the closed-captioned text. You set Hot Words to begin transcribing the text or to maximize the TV Tuner when the Hot Words appear.

You specify words using the Hot Words configuration dialog. (see *Hot Words* in *Advanced Setup* on page 43).

To select Hot Words

- 1 Open the **Setup** window in TV Tuner mode.
- 2 Click the **Hot Words** tab.
- 3 Click on the **New** button.
- 4 Type in the Hot Words that you want.
- 5 Choose the type of match you want:



- **Always** takes effect when the Hot Word occurs.
- **With** takes effect when the Hot Word occurs, and is immediately followed by a Second Word.
- **Without** takes effect when the Hot Word occurs, if it is not immediately followed by a Second Word.
- **Within** takes effect when the Hot Word occurs, if it is within a definable number of words of a Second Word.

- 6 Type in a Second Word where required.
- 7 To allow the **ATI Video Player** to maximize from a minimized state, click the **Enable Hot Words** box.

*To enable the Hot Word to trigger transcription, click the **Enable Transcribing on match** box.*

- 8 Click **New** to add more Hot Words, otherwise click **OK** to save your settings.

To enable/disable specific Hot Words

Select the Hot Word from the list and click the Enable/Disable button:

- + appears before enabled Hot Words
- appears before disabled Hot Words

The Closed Caption button  in the TV Tuner panel must be enabled for Hot Words to function.

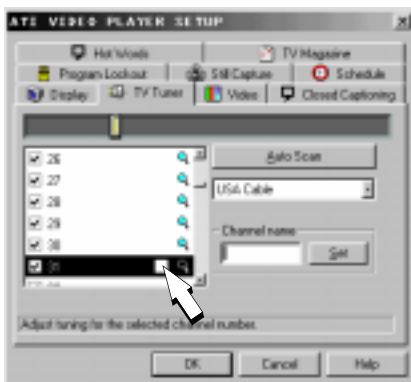
Channel Lockout

Channel Lockout prevents anyone without the correct password from viewing selected TV channels. The first time you lock out a channel, a Channel lockout dialog prompts you for a four-character password.

To lock out a channel

NOTE
If you forget your password, you must uninstall and reinstall your ATI VIDEO PLAYER software to view password-protected programs.

- 1 Open the **Setup** window in TV Tuner mode.
- 2 Click the **TV Tuner** tab.
- 3 Select the channel you want to lock out, and click the box to the right of the channel name.
- 4 Type in a four-character password, then retype the password.



The box to the right of the channel name turns into a padlock.

- 5 Click **OK**.
- The channel up and channel down buttons in the TV Tuner panel skip locked-out channels. The only way to select a locked-out channel is to enter the channel name or number, and type the password when prompted.
 - When a password is active, you will be prompted to enter it when you select the TV Tuner dialog. If you do not enter the password, the TV Tuner dialog will open, but all controls will be disabled; this prevents anyone from changing tuner settings if they do not have the correct password.

To unlock a channel

- 1 Open the **Setup** window in TV Tuner mode.
- 2 Click the **TV Tuner** tab.
- 3 Type in your four-character password.
- 4 Select the channel you want to unlock, and click the padlock to the right of the channel name. Click **OK**.

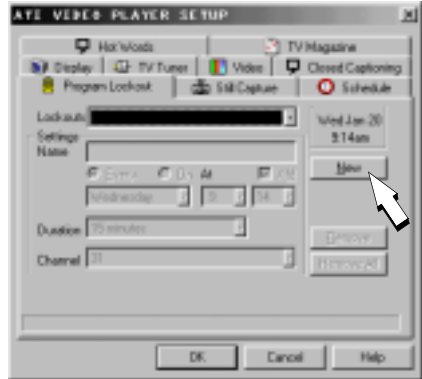
Program Lockout

When you use the TV Tuner, Program Lockout lets you block particular programs at specific times, and set a password to unlock them. Use the Program Lockout settings to specify programs, times, and duration.

To lock out a program

NOTE
If you forget your password, you must uninstall and reinstall your ATI VIDEO PLAYER software to view password-protected programs.

- 1 Open the **Setup** window in TV Tuner mode.
- 2 Click the **Program Lockout** tab.
- 3 Click **New**.
- 4 Enter the programming information for the item you wish to lockout: day of the week or date, start time, duration, and channel number. Pull-down menus for each item list the options you may choose from.
- 5 Click **New** to lockout more programs, otherwise click **OK** to save your settings.
- 6 Type your password in the password dialog, then retype the password. The Setup window closes and saves your settings.

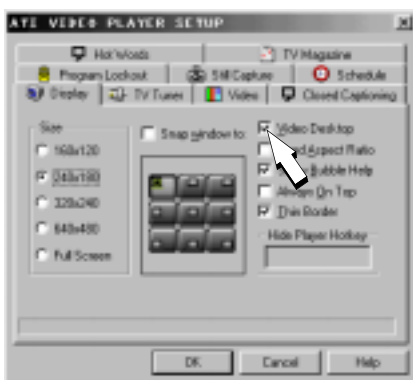


Video Desktop

The Video Desktop function allows you to replace your desktop pattern with live TV display. Once you have enabled Video Desktop, simply minimize the *ATI Video Player* to watch TV on your desktop.

To enable the Video Desktop

- 1 Open the **Setup** window in TV Tuner mode.
- 2 Click the **Displays** tab.
- 3 Make sure the Video Desktop checkbox is checked, then click **OK**.
- 4 Minimize the *ATI Video Player* with the minimize button in the Task control panel.



A small *ATI Video Player* icon appears at the right side of your Taskbar. Click the icon to display a small control panel that you can use to change channels and control the volume. Closed-captioned information is not displayed. To return the *ATI Video Player* to a normal window, click *ATI Video Player* button (not the icon) in your taskbar or select it by pressing **Alt-Tab**.


Closed-Captioned Text

North
American
feature

You can display closed-captioned text that is broadcast with NTSC television programming. The *ATI Video Player* also displays closed-captioned text in NTSC videotapes that contain closed-captioned material.

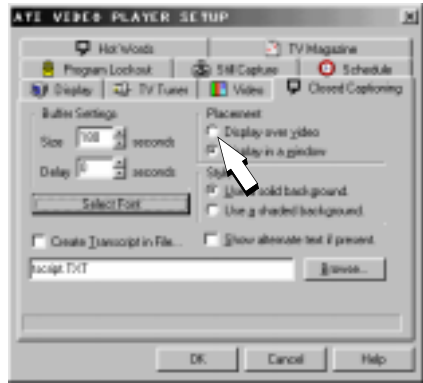
- In full-screen, the text overlays the video, as in standard TV.
- When you play video in a window, you can optionally display the text in a separate window.

To display closed-captioned text


Click the Closed Caption button  in the TV Tuner panel. Click the button a second time to stop showing Closed Captioning.

To display the text overlaid on the video

- 1 Open the **Setup** window in TV Tuner mode.
- 2 Click the **Closed Captioning** tab.
- 3 Click the **Display over video** radio button.
- 4 Click **OK** to save your settings and close the Setup window.



To create a closed-captioned transcript

- 1 Open the **Setup** window in TV Tuner mode.
- 2 Click the **Closed Captioning** tab.
- 3 Check the **Create Transcript in File...** checkbox.
- 4 Use the entry window below the checkbox to name your file. Click the **Browse...** button to specify where the text file will be saved.
- 5 Click **OK** to save your settings and close the Setup window.
- 6 Click the Closed Caption button  in the TV Tuner panel to begin.

Visual Channel Selection


You can browse through several TV channels simultaneously, and select channels by clicking on “thumbnail” images (miniature representations) of the channels. Each thumbnail displays the channel number, and is regularly updated.

- If any channel in the selection list is a locked-out channel, a password is required to access it. If a password is not entered, only unlocked channels are displayed.
- After an autoscan, all detected channels are included in the selection list. A magnifying glass appears to the left of the

lock-out icon. Click the magnifying glass button to add or remove the channel from the selection list.

- Most controls are disabled during Visual Channel Selection.

To use Visual Channel Selection

- 1 Click the magnifying glass button  in the TV Tuner control panel.
A grid of thumbnails appears over your TV display.
- 2 Click the thumbnail for the channel you want to preview.
The channel you clicked becomes “live”, and plays video and audio for a few seconds.
- 3 To select a channel for viewing, double-click a thumbnail.
The grid of thumbnails disappears, and the selected channel appears on your screen.

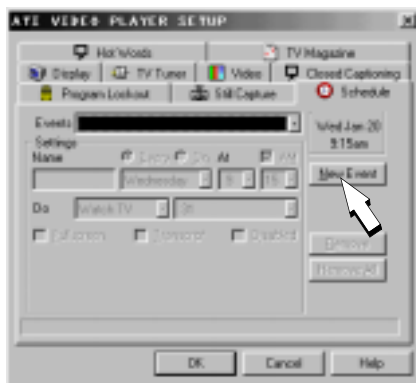
Scheduled Viewing

Scheduled viewing lets you set up the **ATI Video Player** to play particular files and/or watch selected TV channels at times you specify.

When you install the **ATI Video Player**, the Scheduler program is added to your Windows Startup file, so that it runs every time Windows is started. A warning is displayed whenever you click OK after adding an item to the scheduled viewing list.

To use Scheduled Viewing

- 1 Open the **Setup** window in TV Tuner mode.
- 2 Click the **Schedule** tab.
- 3 Click **New Event**.



- 4 Name the event and enter the programming information for the item you wish to schedule: day of the week or date, start time, and duration. Under **Do** select which action you would like the *ATI Video Player* to perform: Watch TV, Play CD, Close Player, or Record TV. Pull-down menus for each item list the options you may choose from. Different options are available depending on which action you specify. See **To use the Digital VCR** below for step-by-step instructions on recording TV.
- 5 Click **New Event** to schedule more programs, otherwise click **OK** to save your settings.
 - Events whose date (On Month & Day) has passed are not automatically removed. To re-activate an event, set its Month & Day to today or later.
 - If the *ATI Video Player* setup dialog is open, or if the About Help... box is being displayed, the *ATI Video Player* cannot process events. If an event occurs, a warning notifies you that a particular event was not processed.
 - When the *ATI Video Player* first runs, if there are any scheduled events recorded and the scheduler program is not running, a warning tells you that the scheduled events will not be processed.

Digital VCR

NOTE
Your existing capture settings will be used. See [Capturing Video and Audio](#) on Page 51.

You can use your *ATI Video Player* software to record a TV channel at a specified time, for a specified duration.

To use the Digital VCR

- 1 Open the **Setup** window in TV Tuner mode.
- 2 Click the **Schedule** tab.
- 3 Click **New Event**.
- 4 Name the event, then select **Record TV** from the **Do** pull-down list.
- 5 Specify the day of the week or the date as well as the start time for the recording. Specify which channel to record.
- 6 Use the entry window to name your file. Click the **Browse...** button to specify where the capture file will be saved.

- 7 Enter the number of minutes to record.
- 8 Click **OK** and minimize or close the Player.


The Player will begin recording at the specified time.

TV Magazine

North
American
feature

When you use the TV Tuner, TV Magazine lets you transcribe closed-captioned broadcasting, including pictures and text. Files are saved in RTF (Rich Text Format), which preserves formatting and can be used in many word processors.

To use TV Magazine

- 1 Open the **Setup** window in TV Tuner mode.
- 2 Click the **TV Magazine** tab.
- 3 Check the **Enable TV Magazine** checkbox.
- 4 Specify the settings you would like according to **TV Magazine Settings** on page 33.
- 5 Click the **Closed Captioning** tab.
- 6 Check the **Create Transcript in File...** checkbox.
- 7 Use the entry window below the checkbox to name your file. Click the **Browse...** button to specify where the RTF file will be saved.
- 8 Click **OK** to save your settings and close the Setup window.
- 9 Click the Closed Caption button  in the TV Tuner panel to begin recording your TV Magazine.

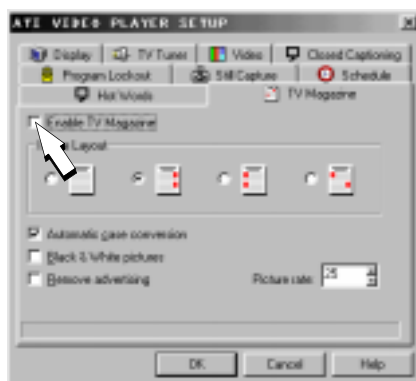


Table 1: TV Magazine Settings


Image Layout	Lets you save transcripts in four different text and picture layouts.
Automatic case conversion	Converts all characters to upper- or lower-case.
Black & White pictures	Saves images as black & white only, to conserve disk space.
Picture rate	Specifies the number of lines of text between each picture.
Remove advertising	<p>Automatically skips commercial advertising when you display or transcribe closed-captioned text. It works best with programs that use scrolling transcripts rather than “text bubbles” to record closed-captioned text; for example: Talk shows, News broadcasts, Sports, and Soap operas.</p> <p>(Depending upon the closed-captioning format, commercials may occasionally be recorded—a little experimentation will show you how to get the best results.)</p>

Secondary Audio Program (SAP)

NOTES
Not all television stations broadcast stereo or SAP. ATI-TV WONDER audio is monaural-only in Europe. SAP stereo is not available in Japan.

The Secondary Audio Program can be used to broadcast, for example, language translations, reading services for the visually impaired, weather forecasts, or information about a show.





To hear the Secondary Audio Program, or to switch from stereo to mono

Click the SAP button  in the TV Tuner control panel to hear the Secondary Audio Program.

Click the SAP button again to hear monaural TV from the left channel and the Secondary Audio Program from the right channel.

Click the SAP button a third time to hear monaural TV. Clicking the SAP button again returns to stereo audio (the default).

The icon on the SAP button changes to show you which sound mode you are currently in:

	Stereo TV Audio
	Secondary Audio Program
	Monaural TV Audio—left channel Secondary Audio Program—right channel
	Monaural TV Audio

CHAPTER 4

Capturing Video and Audio

Still images. You can capture full-color, 24-bit-per-pixel still images from your camcorder or television, save them on your computer's hard disk, and print them. The images are placed on the clipboard, or you can display them in their own window as "thumbnails" (miniature images).

The *ATI Video Player* software saves still images as Windows-standard bitmaps (.bmp). It also supports most industry-standard graphics file formats, so you can insert the images into reports, presentations, letters, and other documents, to add impact to training applications and presentations.

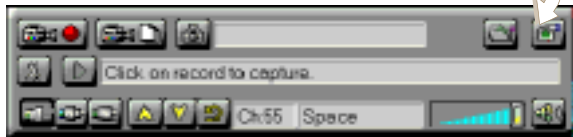
Full-motion video. You can use the "Digital VCR" to capture a stream of full-motion video plus audio from your video source and save it as an .AVI file on your computer's hard disk.

Click the Capture button in the Task control panel.



Use the VCR setup dialog to specify recording quality, recording time, and target drive for captured video. The status box displays the amount of time available for recording at the quality setting you specify.

The Control panel changes to the Digital VCR.




Context-sensitive help is always available when you press the F1 key.

All controls provide bubble help; move the mouse cursor over a control to see a popup description of its function.

Capturing Still Frames

To capture still frames

- 1 Click the camera button  to capture the current frame.
- 2 The still image window opens. You may do the following by using the buttons at the top of the still capture window:
 - **Save** image
 - **Delete** image
 - **Print** image
 - Set current **desktop pattern** to image
- 3 To capture more still frames, click on the Display window to make it the active window, then click the camera button.

To review captured images

Click the image's thumbnail.

- If the selected image has **not** been saved, the thumbnail has a red border. If it **has** been saved, the border is green.
- If an unselected image **has** been saved, its border is grey. If it has **not** been saved, there is no border.

If you try to delete an unsaved still frame, the system prompts you to save it before deleting. If there are multiple unsaved frames when you attempt to close the still frame window, the **Delete All** button deletes them without displaying individual prompts.


For information on setting up capture files, see *Still Capture* in [Advanced Setup](#) on page 43.

Capturing Video

You can capture video in two ways:


- As a **stream of video and audio** that you save as an .AVI file. You also have the option of capturing only audio.
- As a **sequence of still frames** that you save in an .AVI file.

To capture a stream of video and audio

- 1 Click the Record Video button  in the Digital VCR.
The ATI Video Player software starts recording video and audio.
- 2 Press **SPACE** or click the mouse button when you are finished capturing.
- 3 Name your file and click the **Save** button to save your recording.

To capture a sequence of frames

NOTE
Audio is
not
captured in
this mode.

- 1 Click the **Capture Sequence** button  in the Digital VCR control panel.
- 2 Click the **Capture Frame** button in the Capture Sequence window each time you wish to capture a frame.
- 3 Click the **Finished Capturing** button when you are finished.
- 4 Name your file and click the **Save** button to save your sequence.

The quality of the video that you capture depends on the following conditions:

- speed of your system (CPU)
- amount of system memory (RAM)
- performance of your hard disk
- size of the video capture window
- choice of video codec (encoder-decoder):

YUV9	Produces the best quality, but uses the most memory.
VCR 1	Requires a Pentium 166 or faster, and dramatically reduces disk space required.

For information on setting up capture files, see **VCR Setup** and **Advanced VCR setup** in [Advanced Setup](#) on page 43.

Capturing from your VCR or Camcorder

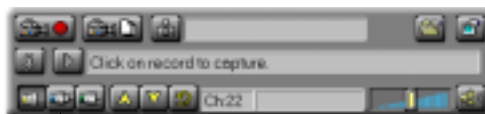
Your *ATI-TV Wonder* tuner card provides you with the ability to capture audio and video data from videotape to digital format on your PC. This allows you to use your computer as a digital studio to edit, enhance, and share your videos!

To capture from your VCR or Camcorder

- 1 Follow the hardware installation instructions on page 12 of this guide to correctly attach the audio and video cables between your *ATI-TV Wonder* tuner card and VCR or Camcorder.
- 2 Start your *ATI Video Player* software.
See [Starting the ATI VIDEO PLAYER](#) on page 13.
- 3 Click the **Capture** icon in the Task control panel.

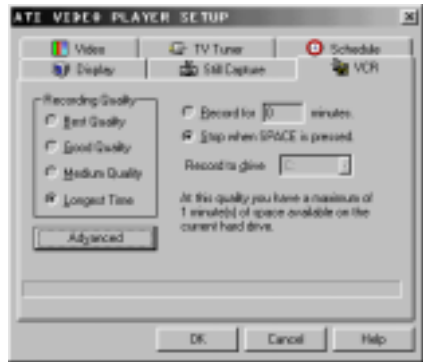


- 4 Click the icon of the input source you intend to capture from (cable, composite or S-Video)



- 5 Verify that the source material is displayed in the preview window.
- 6 In the **Setup** menu, under the **Video** tab you can adjust the color, tint, brightness, and contrast to the desired level.

- 7 The following settings can be made in the **Setup** menu, under the **VCR** tab.

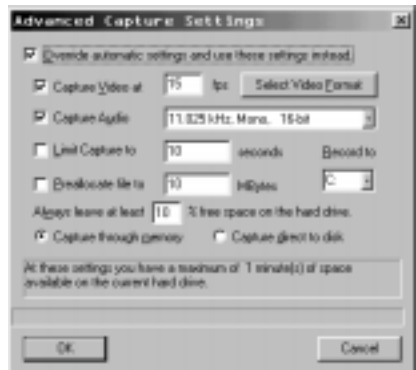


- 8 Select the **recording quality** (note that the higher the quality, the less the video you will be able to store on a given disk).


- 9 Next, under **Record for ____ minutes**, enter the number of minutes you would like to record, *OR* select **Stop when SPACE is pressed** if you want to manually stop recording or record until your disk is full.

- 10 Select the drive you wish to record to under **Record to drive**.

- 11 If you want to override the standard capture settings and manually select the video format, frame rate, audio format, or pre-allocate disk space for capturing, click the **Advanced** button. Change the settings, then click the **OK** button to return to the Setup window.



- 12 Click **OK** in the Setup window to accept the changes and exit.

- 13 Click the **Capture Video** button  to set up for capturing video.

- 14 Cue your VCR or Camcorder to the location you would like to start recording from.

- 15 Click **OK** to start video capture. Please note that you cannot use your keyboard or mouse while capturing. Also note that a countdown timer on the **ATI Video Player**


toolbar indicates an estimate of the amount of disk space you have available for capturing.

- 16 Press **SPACE** or click the mouse button when you are finished capturing.
- 17 Select a file location and name to save your captured file to.

Playing Captured Video and Audio

The **ATI Video Player** can play your captured audio and video immediately after you capture the file until you either quit the application or capture another file. You may play your captured files anytime by using any application that can play .AVI files.

To play captured video and audio

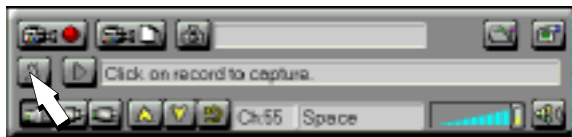
Click the **Play** button  in the Digital VCR control panel.

The **ATI Video Player** software plays your captured file.

Editing Captured Video and Audio

The video editing feature lets you mark start and end points in a captured clip, and save only the portion that you select. The **ATI Video Player** software can edit your captured clips immediately after you capture the file until you either quit the application or capture another file. If you would like to edit your captured file, please do so immediately after capture. Once you quit the application or capture another file, you will not be able to access the file using the **ATI Video Player** software.

Click the Frame Edit button in the Digital VCR.



The Digital VCR changes to the Editing panel.



Press the **F1** key for context-sensitive help.

All controls provide bubble help; move the mouse cursor over a control to see a popup description of its function.

CHAPTER 5

Playing Audio CDs

Click the Audio CD button in the Task control panel.



The Control panel changes to the Audio CD control panel.





Use the Audio CD panel to play standard audio CDs. Advanced features such as Random play, Intro play (which plays the first ten seconds of each track) and Loop play are available.



The Audio CD player has its own display window.

To play an audio CD

- 1** Insert the audio CD into your CD-ROM drive.
- 2** In the Audio CD panel, click the Setup Dialogs button. 
- 3** Click the **Disc Info** tab.
- 4** From the **Available Tracks** list, add or remove tracks as desired. The Play List displays your current selections.
- 5** Click **OK**.
- 6** In the Audio CD panel, click the Play button. 


The Audio CD player uses the Windows® 95 / Windows® 98 standard INI file to store disc names, track names, and the play list. You can use the Setup dialog to enter the name of the artist and the disc.

For more information on using the Audio CD controls and features, see the online help.

CHAPTER 6

Advanced Setup

The *ATI Video Player* software's default settings should work well for most uses. You can also use the Setup dialogs to fine-tune the settings for your particular purposes.

When you open the Setup window (by clicking the **Setup** button  in the Task control panel, right-clicking in the Display panel and selecting **Properties**, or pressing **Ctrl-S**) you can choose a dialog to set up the following (some dialogs only appear in certain modes):

Display	<p>Sets up the display's general appearance and functions.</p> <ul style="list-style-type: none"> • Adjust panel size. • Set panel snap-to grid location and always-on-top. • Turn bubble help on/off. • Turn fixed aspect ratio on/off. • Assign a Hot Key to hide the player. • Replace your desktop pattern with live TV. • Adjust the border size of the display window. • Set the Display window to always appear on top.
Still Capture	<p>Controls how still frames are captured. Where applicable, you can specify where to store them.</p> <ul style="list-style-type: none"> • Capture still frames to the clipboard, to a numbered file (for example, image01.bmp, image02.bmp, etc.), or to a window. • Specify printer options for the captured images. • Specify scaling/image size, print options, and color depth.
Video	<ul style="list-style-type: none"> • Adjust color, tint (NTSC video only), brightness, and contrast. • Select input connector (TV, composite, or S-Video). • Select audio input (Line-In, CD Audio, etc.) • Select broadcast standard: NTSC, PAL, SECAM (this feature is enabled only on selected boards).

TV Tuner	<ul style="list-style-type: none">• Autoscans for active channels and adds them to a list.• Add, delete, and name channels in the list.• Select antenna or cable input and country/location.• Use slider to change channel assignments.• Lock out selected channels.
Closed Captioning (NTSC video only)	<ul style="list-style-type: none">• Display closed captioned text over live video, in its own window, or not at all.• Select solid or shaded background for text.• Transcribe closed captioned text to a text file.• Select buffer settings for the size and delay.• Select font used to display closed captioned text.
Hot Words (NTSC video only)	<ul style="list-style-type: none">• Enable/disable Hot Words in the Closed Captioning.• Add or change Hot Word selection.• Set Hot Words to start transcribing automatically.
Program Lockout	<ul style="list-style-type: none">• Set passwords for Program Lockout, Access Program Lockout page, Access Locked Program, Access Channel Organizer, Tuner panel Double Lockout, and Channel Double Lockout.• Create parameters for locking out a program.
TV Magazine	<ul style="list-style-type: none">• Specify image layout.• Convert characters to upper- or lowercase.• Save images as black & white.• Specify the number of lines of captioning per picture.• Remove advertisements.• The file is saved with the name and the location specified in the settings on the Closed Captioning tab.
VCR	<ul style="list-style-type: none">• Select recording quality.• Specify the number of minutes to record.• Stop when SPACE is pressed.• Specify the drive to save captured video <p>Click the Advanced button to override the automatic setup, and access the full range of capture options.</p>

**Advanced
VCR Setup**

- Select frame rate.
- Select audio and video format.
- Capture to memory or disk.
- Limit capture to preset amount of time.
- Specify percentage of disk space to leave free.
- Pre-allocate maximum file size.

Schedule

- List scheduled events.
- Specify schedule times.
- Select file playback, watch TV, or play CD.
- Display in full screen.
- Transcribe closed-captioned text.
- Enter a new event.
- Remove selected events or all events from the schedule.

If you need additional information about these Setup dialogs, click the Help button. If you experience any difficulty setting up or running the *ATI-TV Wonder* tuner card or the *ATI Video Player* software, please refer to [Troubleshooting](#) on page 15.